

## Instructions to Authors

The Authors are responsible for the formatting of the articles published in the International Journal of Chemical Reactor Engineering. Therefore, special attention should be paid during the preparation of the manuscript and the following instructions should be carefully considered.

The title, authors, affiliations, corresponding author and abstract are separately submitted by the Authors. Acknowledgements should be entered in the submission form so that they may be incorporated into the title page produced for publication. The editorial system will automatically format the title and the abstract pages. In addition, the editorial system will automatically format the header and footer of each page of the article, and it will insert the name of the journal, the reference (Volume and Article numbers) and the page numbers. The responsibility of the Authors starts from the beginning of the main body of the article.

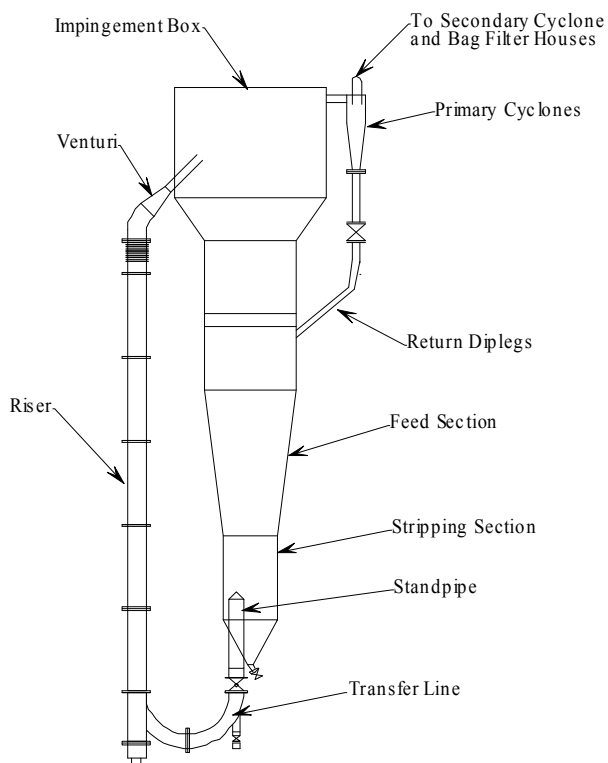


Figure 8. Experimental equipment (courtesy of B. Knapper et al. (2002))

The pages (8.5 x 11 inches) are to be formatted with 1.5-inch margins all around. The font for the main body of text must be black and, if at all possible, in Times or closest comparable font available. The main body of the text should be in 12 point font and footnotes must be in 10 point font. Text must be single spaced and a single column layout with both left and right margins justified must be used.

Headings (e.g., start of sections) should be distinguished from the main body text by their fonts or by using small caps. Use the same font face for all headings and indicate the hierarchy by reducing the font size. There should be space above and below headings.

## **Language & Grammar**

All submissions must be in English (unless the particular bepress journal explicitly states submissions in other languages are permitted). Except for common foreign words and phrases, the use of foreign words and phrases should be avoided.

Authors should use proper, standard English grammar. The Elements of Style by William Strunk, Jr. and E. B. White (now in its fourth edition) is the “standard” guide, but other excellent guides (e.g., The Chicago Manual of Style, University of Chicago Press) exist as well.

Because bepress publishes electronically, page limits are not as relevant as they are in the world of print publications. We are happy, therefore, to let authors take advantage of this greater “bandwidth” to include material that they might otherwise have to cut to get into a print journal. This said, authors should exercise some discretion with respect to length.

## **Indenting, Line Spacing, and Justification**

Indent all paragraphs except those following a section heading. An indent should be at least 2 em-spaces.

Do not insert extra space between paragraphs of text with the exception of long quotations, theorems, propositions, special remarks, etc. These should be set off from the surrounding text by additional space above and below.

Don’t “widow” or “orphan” text (i.e., ending a page with the first line of a paragraph or beginning a page with the last line of a paragraph).

All text should be left-justified (i.e., flush with the left margin—except where indented). Where possible, it should also be right-justified (i.e., flush with the right margin). “Where possible” refers to the quality of the justification. For example, LaTeX and TeX do an excellent job of justifying text. Word does a reasonable job. But some word processors do a lousy job (e.g., they achieve right justification by inserting too much white space within and between words). We prefer flush right margins. However, it is better to have jagged right margins than to have flush right margins with awkward intra- and inter-word spacing. Make your decision on whichever looks best.

## **Mathematics**

Roman letters used in mathematical expressions as variables should be italicized. Roman letters used as part of multi-letter function names should not be italicized. Whenever possible, subscripts and superscripts should be a smaller font size than the main text.

Short mathematical expressions should be typed inline. Longer expressions should appear as display math. Also expressions using many different levels (e.g., such as the fractions) should be set as display math. Important definitions or concepts can also be set off as display math.

Equations should be numbered sequentially. Whether equation numbers are on the right or left is the choice of the author(s). However, you are expected to be consistent in this.

Symbols and notation in unusual fonts should be avoided. This will not only enhance the clarity of the manuscript, but it will also help insure that it displays correctly on the reader's screen and prints correctly on her printer. When proofing your document under PDF pay particular attention to the rendering of the mathematics, especially symbols and notation drawn from other than standard fonts.

$$Re_c = 0.565 Ar^{0.461} \left( \frac{A}{B+C} \right)^{2.3} \quad (1)$$

(1)

$$u_b = u_0 - u_{mf} + 0.711 (g d_b)^{1/2} \quad (2)$$

(2)

## Tables and Figures

To the extent possible, tables and figures should appear in the document near where they are referenced in the text. Large tables or figures should be put on pages by themselves. Avoid the use of overly small type in tables. In no case should tables or figures be in a separate document or file. All tables and figures must fit within 1.5" margins on all sides (top, bottom, left and right) in both portrait and landscape view.

See the appropriate discussion in A Guide to PDF for Scholars Using the bepress System (<http://www.bepress.com/manuals.html>) for details on how best to prepare figures electronically.

Table 3. List of operating conditions and physical properties of materials used

TEST #	1	2	3	4
Temperature (°C)	120	150	240	290
Pressure (kPa)	340	400	480	590
Medium	Sand	Paper	Glass	Plastic

## **Fonts**

The following is a brief guide to fonts with respect to layout. See also the discussion in “A Guide to PDF for Scholars Using the bepress System” (<http://www.bepress.com/manuals.html>) for font-related issues in the production of good PDF files. We cannot accept Type3 fonts.

## **Colored text**

Set the font color to black for the majority of the text. bepress encourages authors to take advantage of the ability to use color in the production of figures, maps, etc., however, you need to appreciate that this will cause some of your readers problems when they print the document on a black & white printer. For this reason, you are advised to avoid the use of colors in situations where their translation to black and white would render the material illegible or incomprehensible.

Please ensure that there are no colored mark-ups or comments in the final version, unless they are meant to be part of the final text. (You may need to “accept all changes” in track changes or set your document to “normal” in final markup.)

Whenever possible use italics to indicate text you wish to emphasize rather than underlining it. The use of color to emphasize text is discouraged.

## **Titles**

Whenever possible, titles of books, movies, etc., should be set in italics rather than underlined.

## **Footnotes**

Footnotes should appear at the bottom of the page on which they are referenced rather than at the end of the paper. Footnotes should be in 10 pt. Times or closest comparable font available, they should be single spaced, and there should be a footnote separator rule (line). Footnote numbers or symbols in the text must follow, rather than precede, punctuation. Excessively long footnotes are probably better handled in an appendix. All footnotes should be left and right-justified (i.e., flush with the right margin), unless this creates awkward spacing.

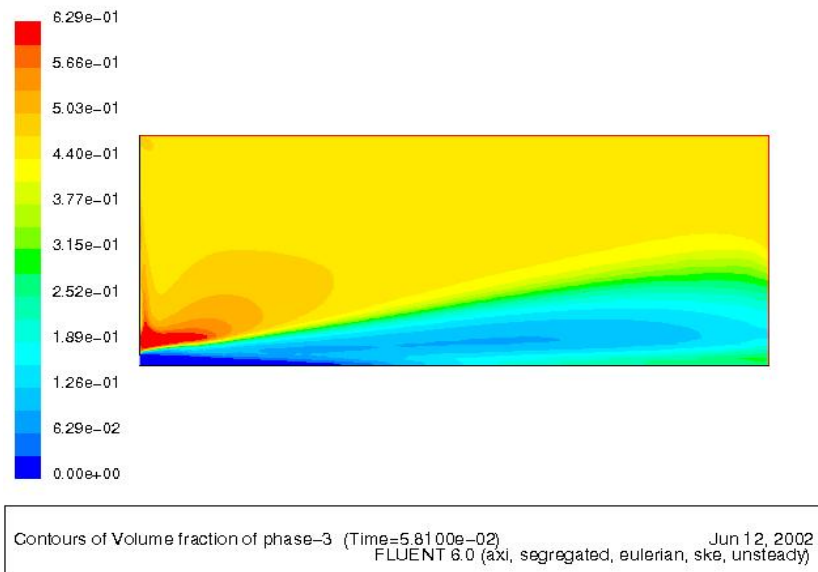


Figure 9. Volume fraction contours (courtesy of Dr. Alexander Yelkhovsky, U. of A.)

## Notation

$A$  parameter in Equation (1)  
 $d$  diameter, m  
 $u$  velocity, m/s

Greek Letters

$\rho$  density, kg/m<sup>3</sup>

Subscripts

$b$  bubble  
 $mf$  minimum fluidization

## References

Marion T. J., "Heat Transfer in Fixed Bed Reactors", AIChE Journal, 1987, 16, 8, 209-219.

Smith J. P., Watson K. T., Gion and K. Marshal Eds., "Reactor Engineering in the 21st Century", "Frontiers of Chemical Engineering", 1983, Science Press International, Paris.

Wilson F., "Pressure Drop Through the Distributor of Downflow Reactors",  
Chemical Engineering Science, 2002, 56, 2, 67-79.